

BROWN JORDAN SERVICES, INC.

***** IMPORTANT SAFETY NOTICE *****

HAMPTON BAY

FALL RIVER SWIVEL ROCKER CHAIR RECALL

August, 2016

Dear Valued Customer,

We have been advised that you may have purchased a Hampton Bay Fall River Patio Set containing swivel rocker chairs affected by this recall. These swivel rocker chairs are being voluntarily recalled in cooperation with the U.S. Consumer Product Safety Commission and Health Canada. It may be possible for the swivel rocker base of the chair to break because of incomplete welds where the chair legs meet the center cylinder of the chair creating the potential for injury from falling off of the chair.

Only Hampton Bay Fall River swivel rocker chairs are affected. Other Hampton Bay Fall River items are not affected by the recall. To determine if your chairs are included in this recall, **please see the attached instructions**. The chairs do not need to be returned, but can be easily repaired by replacing the swivel rocker chair base which will be supplied by Brown Jordan Services, Inc.

If you determine that your Fall River swivel rocker chairs are affected by this recall based on the inspection in the attachment, please discontinue using them immediately and visit our website at www.bjsoutdoor.com and click "Customer Care" and the "Recall Information". You can also email us at customersupport@bjsoutdoor.com or call our toll free number at 855-899-2127.

We apologize for any inconvenience this problem may have caused you. We take pride in the quality of our products, and the safety of our customers is foremost.

Sincerely,

Brown Jordan Services, Inc.

To determine if you need a replacement swivel rocker base kit, please follow the procedure outlined below.

1. Carefully turn your chair on it's side, as shown to the right, to inspect welds on the swivel rocker base. Using a flashlight, locate the point at which the chair legs meet the center cylinder of the chair base and compare to the photos below.



2. If the welds where each chair leg meets the center cylinder go all the way around each joint like PHOTO 1, you do not need a repair kit. If the welds where each chair leg meets the center cylinder do not go all the way around each joint like PHOTO 2, your chair is included in this recall.

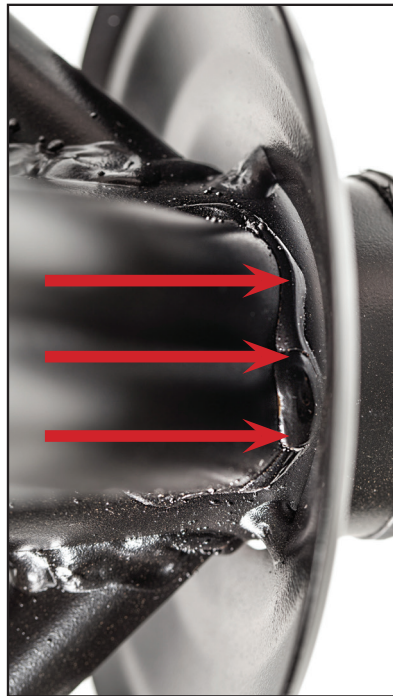


PHOTO 1 (CORRECT)

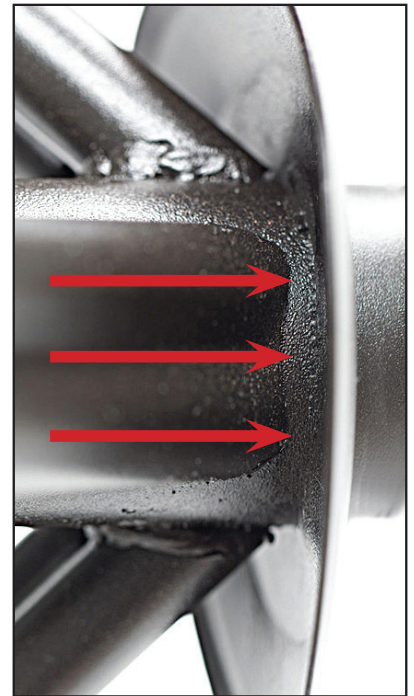


PHOTO 2 (INCORRECT)

3. Repeat this inspection for all chairs that have a swivel base.

If you determine that your Fall River swivel rocker chairs are affected by this recall, or if you have any questions about the inspection, please discontinue using them immediately and contact us toll-free at (855) 899-2127, Monday through Friday between 8 a.m and 5 p.m. EDT, or visit our website at www.bjsoutdoor.com and click on "Customer Care" and then "Recall Information" for more information. You can also email us at customersupport@bjsoutdoor.com.